

GLENWOOD

AT ALTAIR

PAIRED HOMES

1,772 – 2,022 Sq. Ft.

3 – 4 Bedrooms | 2.5 – 3.5 Baths



Brookfield
Residential

GLENWOOD

AT ALTAIR

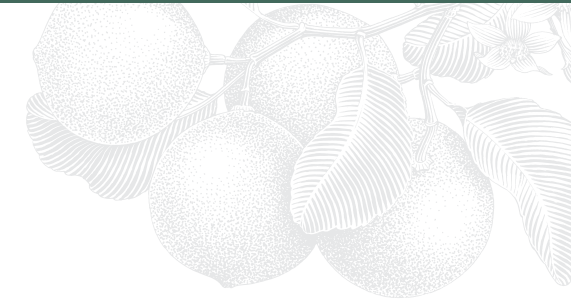
PLAN 1R

3-Story Paired Home

1,772 Sq. Ft.

3 Bedrooms • 2.5 Baths

Flex Room + Covered Deck



Transitional Mercantile Exterior



PLAN 3
(LEFT)

PLAN 1
(RIGHT)

PLAN 2
(LEFT)

PLAN 3Y
(RIGHT)

All square footage is approximate. Windows and doors vary by elevation or home location in building. Stated dimensions are approximate estimates and not intended for space planning purposes. Renderings, elevations and floorplans shown are an artist's conception only and are not intended to show specific detailing or supersede architectural plans. See a Brookfield Residential representative for details. 🏠

GLENWOOD

AT ALTAIR

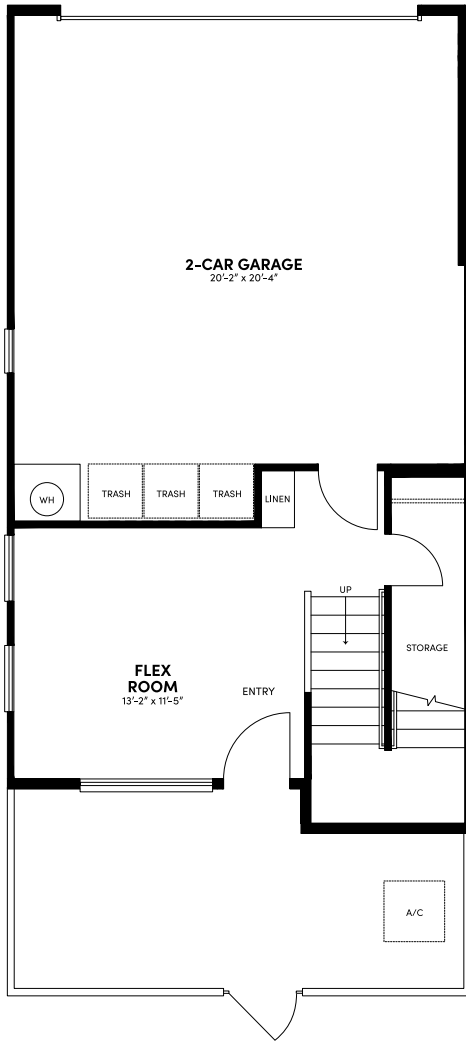
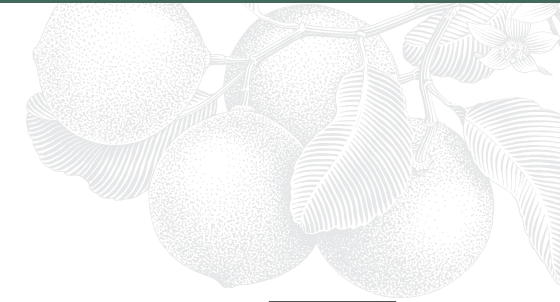
PLAN 1R

3-Story Paired Home

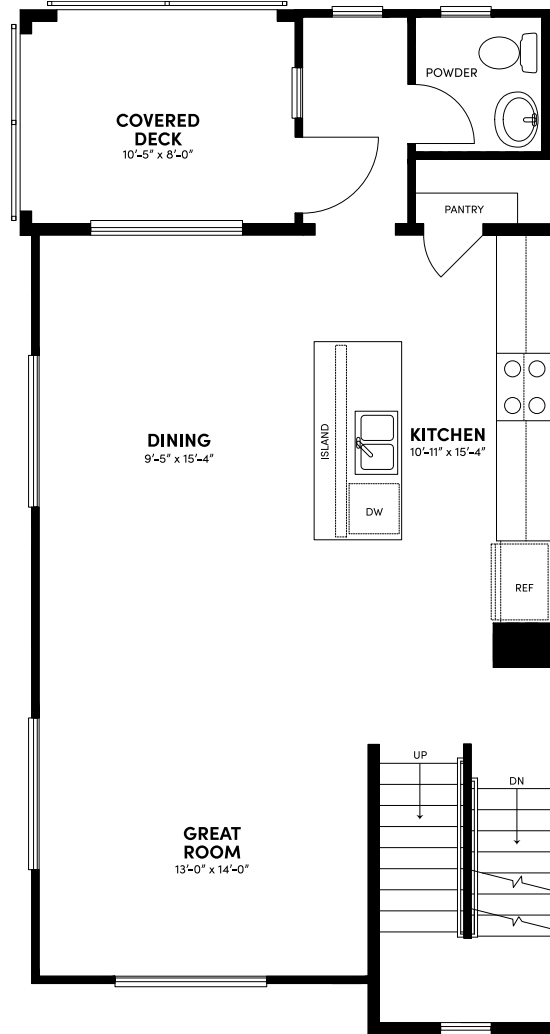
1,772 Sq. Ft.

3 Bedrooms • 2.5 Baths

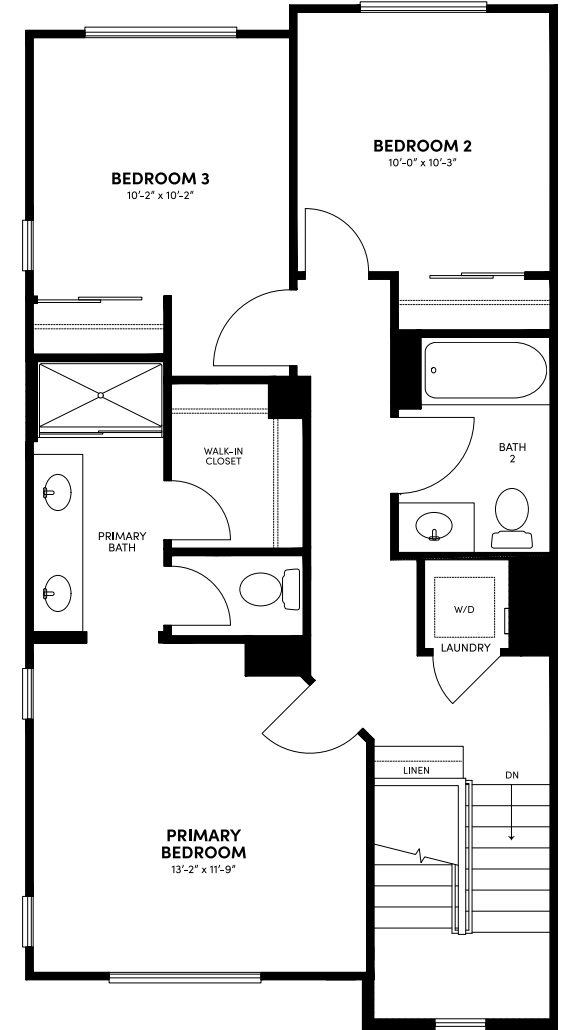
Flex Room + Covered Deck



FIRST FLOOR



SECOND FLOOR



THIRD FLOOR

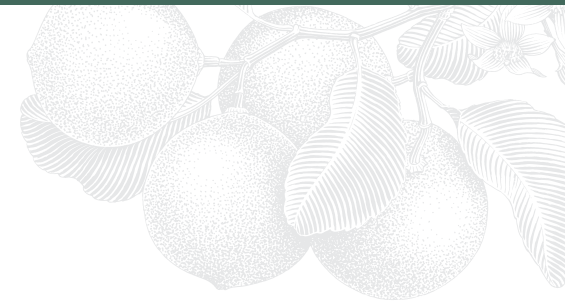
All square footage is approximate. Windows and doors vary by elevation or home location in building. Stated dimensions are approximate estimates and not intended for space planning purposes. Renderings, elevations and floorplans shown are an artist's conception only and are not intended to show specific detailing or supersede architectural plans. See a Brookfield Residential representative for details. 🏠

GLENWOOD

AT ALTAIR

PLAN 2

3-Story Paired Home
1,928 Sq. Ft. (Side Enhancement 1,954 Sq. Ft.)
4 Bedrooms • 3.5 Baths
Flex Room + Covered Deck



Transitional Mercantile Exterior



PLAN 1

PLAN 2
(LEFT)

PLAN 3Y
(RIGHT)

PLAN 3

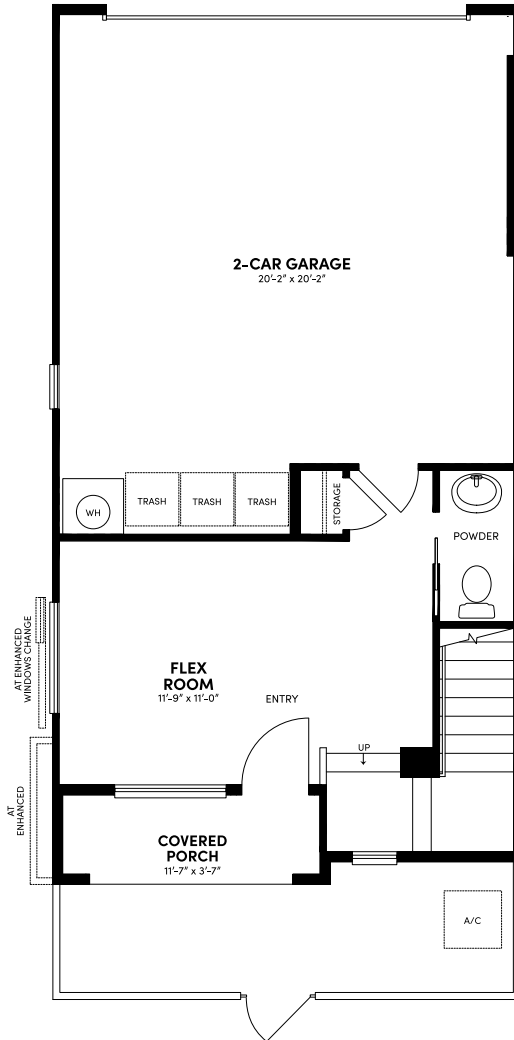
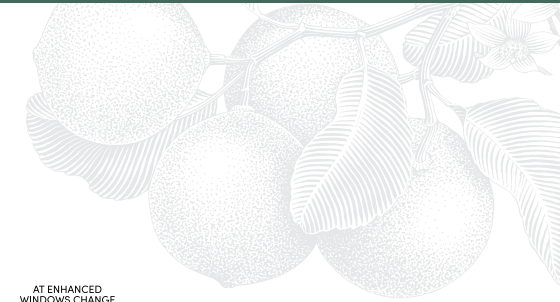
All square footage is approximate. Windows and doors vary by elevation or home location in building. Stated dimensions are approximate estimates and not intended for space planning purposes. Renderings, elevations and floorplans shown are an artist's conception only and are not intended to show specific detailing or supersede architectural plans. See a Brookfield Residential representative for details. 🏠

GLENWOOD

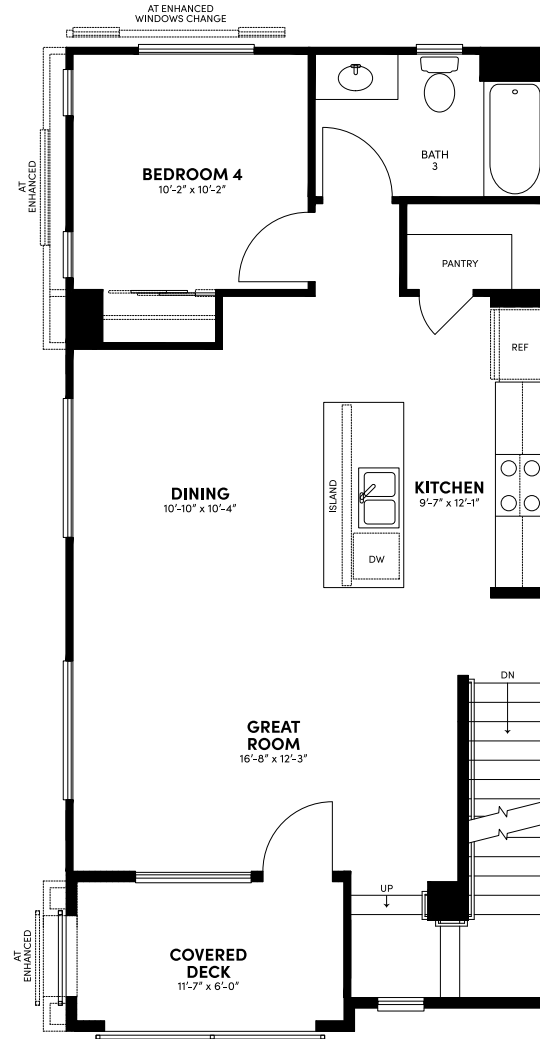
AT ALTAIR

PLAN 2

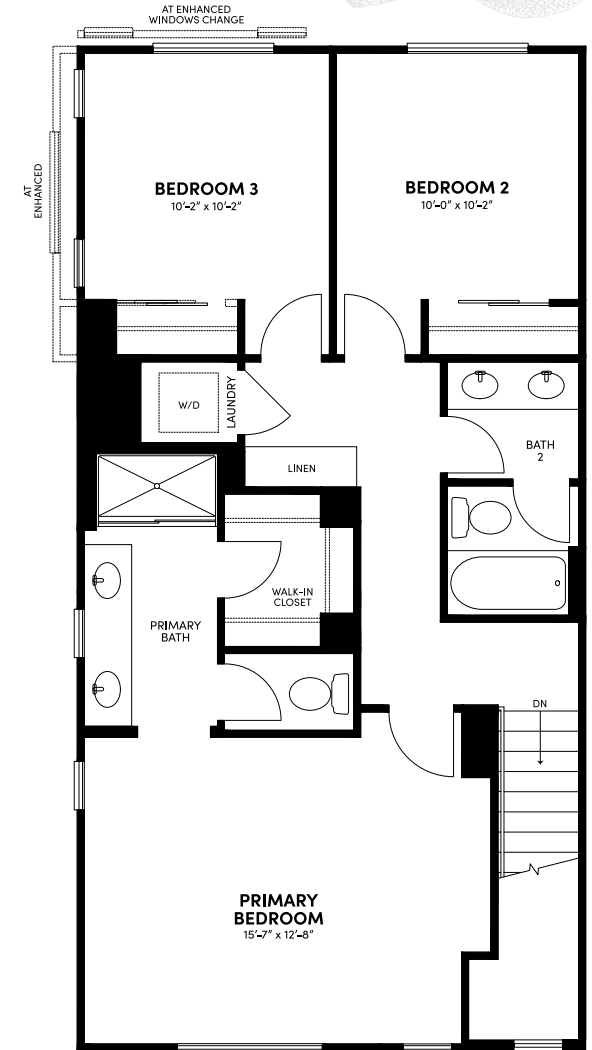
3-Story Paired Home
 1,928 Sq. Ft. (Side Enhancement 1,954 Sq. Ft.)
 4 Bedrooms • 3.5 Baths
 Flex Room + Covered Deck



FIRST FLOOR



SECOND FLOOR



THIRD FLOOR

All square footage is approximate. Windows and doors vary by elevation or home location in building. Stated dimensions are approximate estimates and not intended for space planning purposes. Renderings, elevations and floorplans shown are an artist's conception only and are not intended to show specific detailing or supersede architectural plans. See a Brookfield Residential representative for details. 🏠

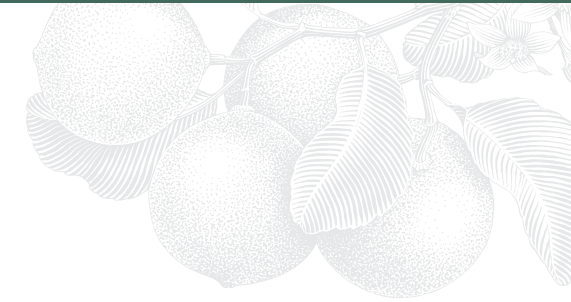
PLAN 3R (Not Modeled)

3-Story Paired Home

1,984 Sq. Ft.

4 Bedrooms • 3.5 Baths

Covered Deck



Transitional Mercantile Exterior



PLAN 3
(LEFT)

PLAN 1
(RIGHT)

PLAN 2
(LEFT)

PLAN 3Y
(RIGHT)

All square footage is approximate. Windows and doors vary by elevation or home location in building. Stated dimensions are approximate estimates and not intended for space planning purposes. Renderings, elevations and floorplans shown are an artist's conception only and are not intended to show specific detailing or supersede architectural plans. See a Brookfield Residential representative for details. 🏠

GLENWOOD

AT ALTAIR

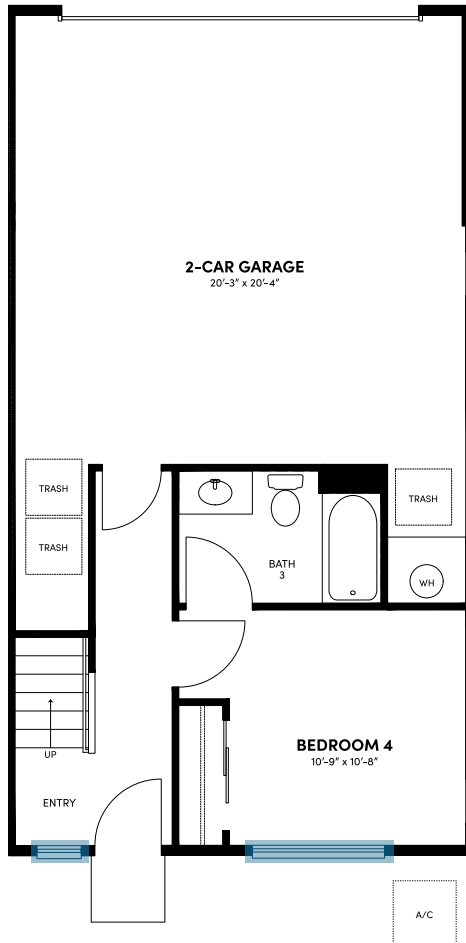
PLAN 3R (Not Modeled)

3-Story Paired Home

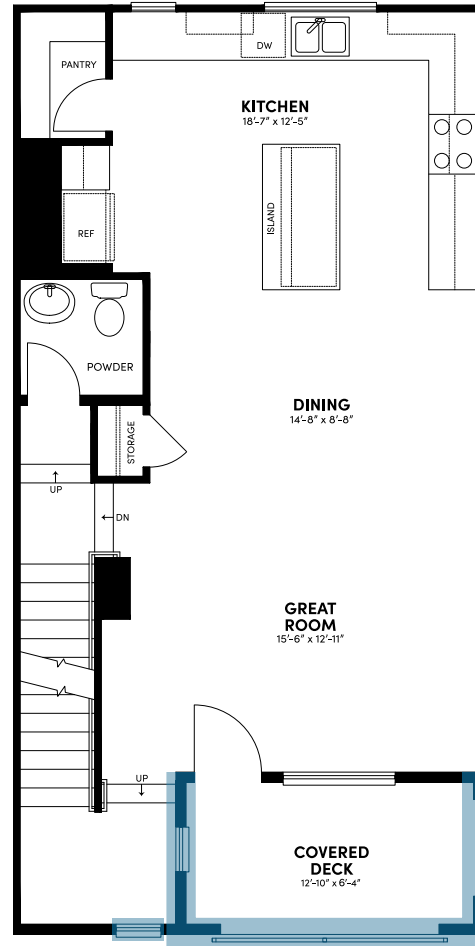
1,984 Sq. Ft.

4 Bedrooms • 3.5 Baths

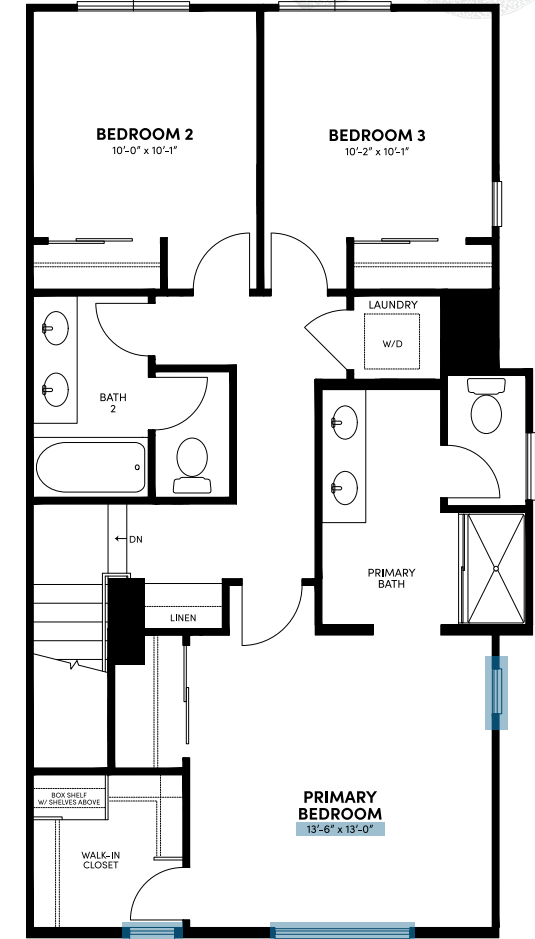
Covered Deck



FIRST FLOOR



SECOND FLOOR



THIRD FLOOR

General differences between Plan 3 and Plan 3Y
(Confirm all details with Sales Team prior to purchase)

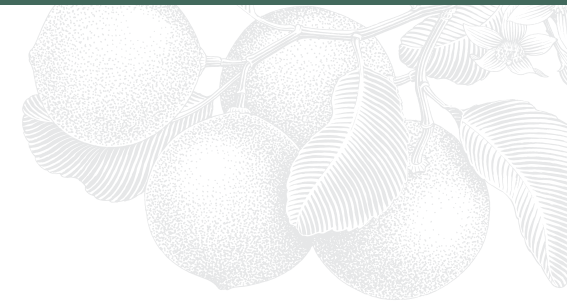
All square footage is approximate. Windows and doors vary by elevation or home location in building. Stated dimensions are approximate estimates and not intended for space planning purposes. Renderings, elevations and floorplans shown are an artist's conception only and are not intended to show specific detailing or supersede architectural plans. See a Brookfield Residential representative for details. 🏠

GLENWOOD

AT ALTAIR

PLAN 3YR

3-Story Paired Home
2,013 Sq. Ft. (Side Enhancement 2,022 Sq. Ft.)
4 Bedrooms • 3.5 Baths
Covered Deck



Transitional Mercantile Exterior



PLAN 1

PLAN 2
(LEFT)

PLAN 3Y
(RIGHT)

PLAN 3

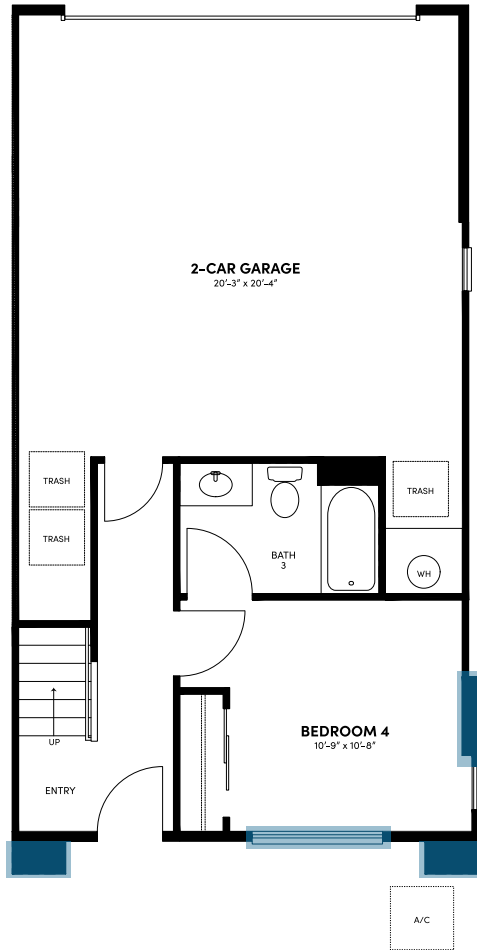
All square footage is approximate. Windows and doors vary by elevation or home location in building. Stated dimensions are approximate estimates and not intended for space planning purposes. Renderings, elevations and floorplans shown are an artist's conception only and are not intended to show specific detailing or supersede architectural plans. See a Brookfield Residential representative for details. 🏠

GLENWOOD

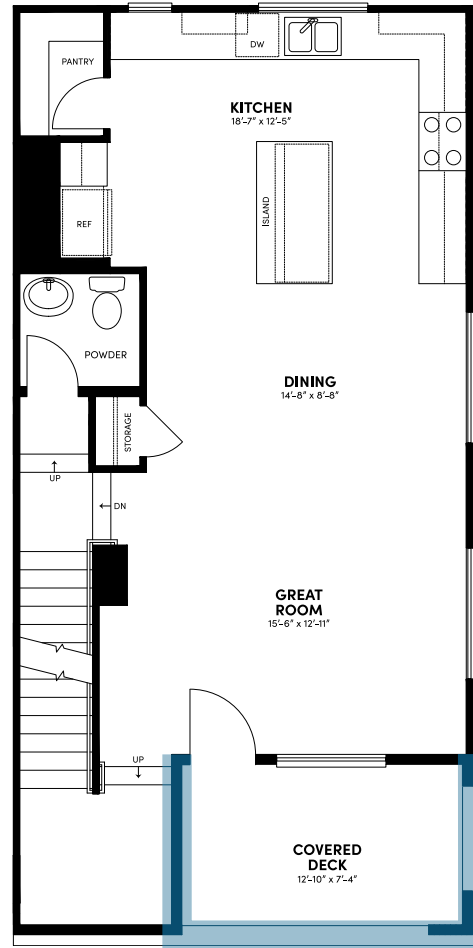
AT ALTAIR

PLAN 3YR

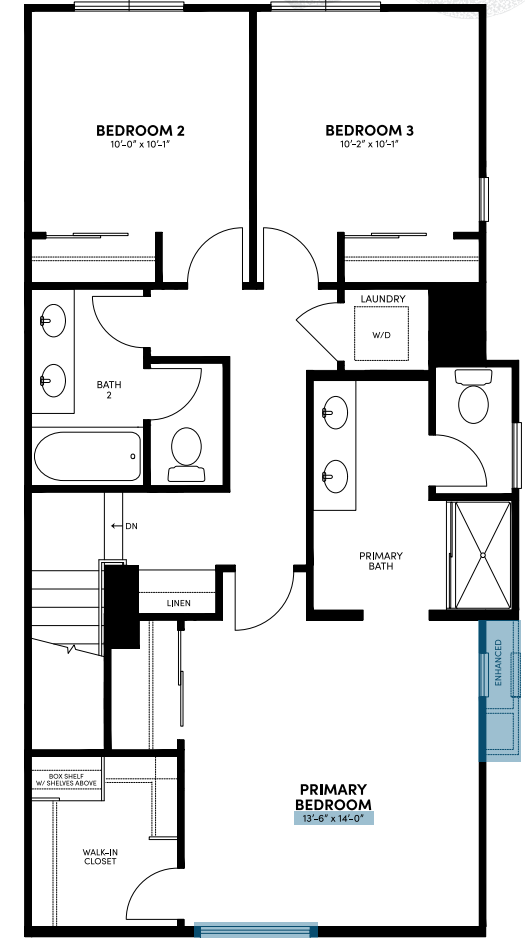
3-Story Paired Home
 2,013 Sq. Ft. (Side Enhancement 2,022 Sq. Ft.)
 4 Bedrooms • 3.5 Baths
 Covered Deck



FIRST FLOOR



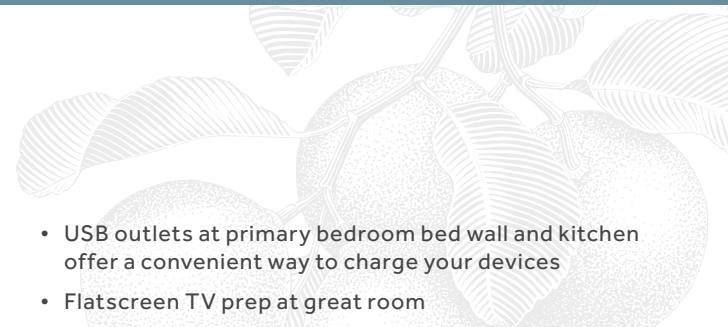
SECOND FLOOR



THIRD FLOOR

General differences between Plan 3 and Plan 3Y
 (Confirm all details with Sales Team prior to purchase)

All square footage is approximate. Windows and doors vary by elevation or home location in building. Stated dimensions are approximate estimates and not intended for space planning purposes. Renderings, elevations and floorplans shown are an artist's conception only and are not intended to show specific detailing or supersede architectural plans. See a Brookfield Residential representative for details. 🏠



Exceptional Exteriors

- A welcoming street scene comprised of detailed architectural-style exteriors in Transitional Mercantile at Glenwood, Modern Farmhouse at Sky and California Agrarian at Waypoint
- Decorative building exterior light fixtures (vary by elevation) and address signs (per home)
- Inviting low-maintenance 8' entry doors in painted finish with matte black Schlage® front door hardware
- Convenient direct-access garages with sectional roll-up garage door to match color schemes, plus two three-button transmitters

Stylish Living Spaces

- Ceiling Heights:
 - Glenwood: 9' on all floors (with drops in certain locations)
 - Sky Plans 1 & 2: 9' 1st floor, with 9' 2nd floor (with drops in certain locations)
 - Sky Plans 3 & 4: 10' 1st floor, with 9' 2nd floor (with drops in certain locations)
 - Waypoint: 9' on all floors (with drops in certain locations)
- Clean-lined square wall corners
- Decorative door casings and 2-9/16" baseboards
- Two-panel interior doors with Schlage® J-series Dublin Egg Knob in Aged Bronze finish
- Stylish tile flooring in entry, kitchen, all baths and laundry with carpet in balance of home
- Primary Baths:
 - Quartz countertops with 6" backsplash and oval undermount sinks with Delta® single-handle faucets in Chrome
 - Shower with simulated subway tile surround recessed niche
 - Convenient medicine cabinet for extra storage

- Secondary Baths:
 - Quartz countertops with 6" backsplash and oval undermount sink with Delta® two-handle faucet in Chrome
 - Tub/shower combo with simulated subway tile surround
- Powder Baths:
 - Elegant pedestal sink with Delta® single-handle faucet in Chrome at Glenwood and Sky
 - Quartz countertop with 6" backsplash and oval undermount sink with single-handle faucet in Chrome and cabinet at Waypoint

Modern Kitchens

- Stainless steel Whirlpool® appliance package includes:
 - 30" Glass top Electric Range
 - 30" Micro/Hood combo over Range
 - 24" Dishwasher
- European-style white frameless raised panel thermofoil cabinetry with satin nickel pencil pull hardware
- Stylish square-edge granite countertops with 6" backsplash and full-height backsplash behind Range available in Daltile Bengal White
- Undermount stainless steel double-basin kitchen sink with Delta® Nicolli™ single-handle pullout faucet in Chrome finish
- Convenient roll-out trash and recycling cabinet with two bins
- LED under-cabinet task lighting

Technology & Energy Efficiency

- Energy-efficient LED disk lighting throughout home, including great room and primary bedroom
- Technology pre-wiring with multiple Category 6 data wire to allow for high-speed data connections in primary bedroom, secondary bedrooms, great room and offices/tech spaces

- USB outlets at primary bedroom bed wall and kitchen offer a convenient way to charge your devices
- Flatscreen TV prep at great room
- Included J-box in great room, primary and secondary bedrooms for future pendant light/ceiling fan
- Low-E dual-glazed vinyl windows with white frame color, providing solar control and visible light transmittance, resulting in utility cost savings with increased efficiency
- Central air conditioning and heating with programmable Honeywell® Lyric™ T6 thermostat creates more balance and energy-conscious consumption
- High-performance Delta® faucets and low-flow elongated toilets and showerheads conserve water
- Energy-efficient tanked electric water heaters
- Pre-plumbed with conduit for Electric Vehicle Charging Station in garage (homeowner's electrician needed to install desired EV charging equipment, associated circuit breaker in the sub-panel)
- Full Pest Control service at move-in covers the interior and exterior of the home
- Included Solar Panel System (must select lease payments or purchase)
 - Glenwood:
 - Plan 1: 3.28 kW
 - Plan 2, 3 & 3Y: 3.69 kW
 - Sky:
 - Plan 1: 3.28 kW
 - Plan 2: 4.1 kW
 - Plan 3 & 4: 3.69 kW
 - Waypoint:
 - All plans: 3.69 kW

ALTAIR

TEMECULA

43500 Altair Vista, Temecula, CA 92590 | (951) 904-2513

AltairTemecula.com

Brookfield
Residential